

Appendix A
Common Terrestrial and Aquatic Plants,
Mammals, Reptiles, Amphibians, Birds, and Fish of
J. Strom Thurmond Project

Terrestrial Plants

Common Name	Scientific Name
Overstory	
Southern Sugar Maple	<i>Acer barbatum</i>
Red Maple	<i>Acer rubrum</i>
Silver Maple	<i>Acer saccharum</i>
River Birch	<i>Betula nigra</i>
Bitternut Hickory	<i>Carya cordiformis</i>
Pignut Hickory	<i>Carya glabra</i>
Shagbark Hickory	<i>Carya ovata</i>
Mockernut Hickory	<i>Carya tomentosa</i>
White Ash	<i>Fraxinus americana</i>
Green Ash	<i>Fraxinus pennsylvanica</i>
Sweetgum	<i>Liquidambar styraciflua</i>
Yellow Poplar	<i>Liriodendron tulipifera</i>
Southern Magnolia	<i>Magnolia grandiflora</i>
Blackgum	<i>Nyssa sylvatica</i>
Shortleaf Pine	<i>Pinus echinata</i>
Slash Pine	<i>Pinus elliotii</i>
Longleaf Pine	<i>Pinus palustris</i>
Loblolly Pine	<i>Pinus taeda</i>
Virginia Pine	<i>Pinus virginiana</i>
Sycamore	<i>Platanus occidentalis</i>
Eastern Cottonwood	<i>Populus deltoides</i>
White Oak	<i>Quercus alba</i>
Swamp White Oak	<i>Quercus bicolor</i>
Scarlet Oak	<i>Quercus coccinea</i>
Southern Red Oak	<i>Quercus falcata</i>
Turkey Oak	<i>Quercus laevis</i>
Laurel Oak	<i>Quercus laurifolia</i>
Blackjack Oak	<i>Quercus marilandica</i>
Water Oak	<i>Quercus nigra</i>
Pin Oak	<i>Quercus palustris</i>
Willow Oak	<i>Quercus phellos</i>
Swamp Chestnut Oak	<i>Quercus prinus</i>
Northern Red Oak	<i>Quercus rubra</i>
Post Oak	<i>Quercus stellata</i>
Black Oak	<i>Quercus velutina</i>
Winged elm	<i>Ulmus alata</i>
American elm	<i>Ulmus americana</i>

Terrestrial Plants Continued

Common Name	Scientific Name
Midstory	
Boxelder	<i>Acer negundo</i>
Beauty-berry	<i>Callicarpa americana</i>
American Hornbeam, Musclewood	<i>Carpinus caroliniana</i>
Hackberry	<i>Celtis occidentalis</i>
Redbud	<i>Cercis canadensis</i>
Fringetree	<i>Chionanthus virginicus</i>
Dogwood	<i>Cornus florida</i>
Hawthorn	<i>Craetagus sp.</i>
Persimmon	<i>Diospyros virginiana</i>
American Beech	<i>Fagus grandifolia</i>
Honeylocust	<i>Gleditsia triacanthos</i>
American Holly	<i>Ilex opaca</i>
Black Walnut	<i>Juglans nigra</i>
Eastern Red Cedar	<i>Juniperus virginiana</i>
Red Mulberry	<i>Morus rubra</i>
Waxmyrtle	<i>Myrica cerifera</i>
Eastern Hop Hornbeam, Ironwood	<i>Ostrya virginiana</i>
Sourwood	<i>Oxydendron arboreum</i>
Black Cherry	<i>Prunus serotina</i>
Wild Plum	<i>Prunus sp.</i>
Winged Sumac	<i>Rhus copallina</i>
Black locust	<i>Robinia pseudoacacia</i>
Palmetto	<i>Sabal minor</i>
Black Willow	<i>Salix nigra</i>
Sassafras	<i>Sassafras albidum</i>
Strawberry Bush	<i>Euonymus americanus</i>
Southern Catapala	<i>Catalpa bignonioides</i>
Sparkleberry	<i>Vaccinium arboreum</i>
Switch Cane	<i>Arundinaria tecta</i>
River Cane	<i>Arundinaria gigantea</i>
Blueberry	<i>Vaccinium corymbosum</i>
Partridge Pea	<i>Chamaecrista fasciculata</i>
Ground Covers	
Trumpet Creeper	<i>Campsis radicans</i>
Yellow jessamine	<i>Gelsemium sempervirens</i>
Virginia Creeper	<i>Parthenocissus quinquefolia</i>
Ferns	<i>Polystichum sp.</i>
Elephant's-Foot	<i>Elephantopus tomentosus</i>
Spotted Wintergreen	<i>Chimaphila maculata</i>
Aster	<i>Aster sp.</i>
Dogfennel	<i>Eupatorium capillifolium</i>

Ground Covers Continued

Common Name	Scientific Name
Uniola	<i>Uniola sp.</i>
Poison Oak	<i>Rhus quercifolia</i>
Poison Ivy	<i>Rhus radicans</i>
Wild Sunflower	<i>Helianthus sp.</i>
Ragweed	<i>Ambrosia artemisifolia</i>
Poison Sumac	<i>Rhus vernix</i>
Partridge Berry	<i>Mitchella repens</i>
Blackberry	<i>Rubus sp.</i>
Greenbrier, Smilax	<i>Smilax sp.</i>
Panicum	<i>Panicum sp.</i>
Plumegrass	<i>Erianthus sp.</i>
Wood grass	<i>Uniola sessiliflora</i>
Beggarweed	<i>Desmodium sp.</i>
Periwinkle	<i>Vinca minor</i>
Bluestem Grass	<i>Andropogon sp.</i>
Muscadine	<i>Vitis rotundifolia</i>

Aquatic Plants

Common Name	Scientific Name
Brazilian elodea, egeria	<i>Egeria densa</i>
Alligatorweed	<i>Alternanthera philoxeroides</i>
American lotus, lotus lily	<i>Nelumbo lutea</i>
Fanwort	<i>Cabomba caroliniana</i>
Coontail, hornwort	<i>Ceratophyllum demersum</i>
Chara, musk grass	<i>Chara sp.</i>
Elodea	<i>Elodea canadensis</i>
Marsh Hibiscus	<i>Hibiscus moscheutos</i>
Southern watergrass	<i>Hydrochloa caroliniensis</i>
Water pennywort	<i>Hyrocotyle umbellata</i>
American Waterwillow	<i>Justicia americana</i>
Southern naiad	<i>Najas guadalupensis</i>
Slender naiad, spiny-leaf naiad	<i>Najas minor</i>
Fragrant waterlily	<i>Nymphaea odorata</i>
Maidencane	<i>Panicum hemitomon</i>
Water paspalum	<i>Paspalum fluitans</i>
Pickerelweed	<i>Pontederia cordata</i>
Pondweed	<i>Potamogeton sp.</i>
Arrowheads	<i>Sagittaria sp.</i>
Cattail	<i>Typha sp.</i>

Non Native Plants

Common Name	Scientific Name
Japanese honeysuckle	<i>Lonicera japonica</i>
China-berry	<i>Melia azedarach</i>
Kudzu	<i>Pueraria lobata</i>
Wisteria	<i>Wisteria frutescens</i>
Chinese Tallow	<i>Sapium sebiferum</i>
Giant Reed	<i>Arundo donax</i>
Chinese Privet	<i>Ligustrum sinense</i>
Old World Climbing Fern	<i>Lygodium microphyllum</i>
Johnson Grass	<i>Sorghum halepense</i>
Autumn Olive or Eleagnus	<i>Eleagnus umbellata</i>
Nandina	<i>Nandina domestica</i>
Brazilian Vervain	<i>Verbena brasiliensis</i>
Bamboo	<i>Phyllostachys sp</i>
Mimosa	<i>Albizia julibrissin</i>
Hydrilla	<i>Hydrilla verticillata</i>
Alligator Weed	<i>Alternanthera philoxeroides</i>
Parrot Feather	<i>Myriophyllum aquaticum</i>
Waterhyacinth	<i>Eichhornia crassipes</i>
Water primrose	<i>Ludwigia hexapetala</i>
Eurasian watermilfoil	<i>Myriophyllum spicatum</i>

Birds

Common Name	Scientific Name	Season
Ducks & Geese		
Wood Duck	<i>Aix sponsa</i>	Year Round
Mallard	<i>Anas platyrhynchos</i>	Year Round
Canada Goose	<i>Branta canadensis</i>	Year Round
Hooded Merganser	<i>Lophodytes cucullatus</i>	Year Round
Blue-winged Teal	<i>Anas discors</i>	Winter
Green-winged Teal	<i>Podilymbus podiceps</i>	Winter
American Black Duck	<i>Anas rubripes</i>	Winter
Northern Shovelers	<i>Anas clypeata</i>	Winter
American Wigeon	<i>Anas Americana</i>	Winter
Gadwall	<i>Anas strepera</i>	Winter
Northern Pintail	<i>Anas acuta</i>	Winter
Canvasback	<i>Aythya vallisnera</i>	Winter
Redhead	<i>Aythya americana</i>	Winter
Ring-necked Duck	<i>Aythya collaris</i>	Winter

Ducks & Geese Continued

Common Name	Scientific Name	Season
Greater Scaup	<i>Aythya marila</i>	Winter
Lesser Scaup	<i>Aythya affinis</i>	Winter
Long-tailed Duck	<i>Clangula hyemalis</i>	Winter
Bufflehead	<i>Bucephala albeola</i>	Winter
Common Golden eye	<i>Bucephala clangula</i>	Winter
Common Merganser	<i>Mergus merganser</i>	Winter
Red Breasted Merganser	<i>Mergus serrator</i>	Winter
Ruddy Duck	<i>Oxyura jamaicensis</i>	Summer
Loons		
Common Loon	<i>Gavia immer</i>	Winter
Pacific Loon	<i>Gavia Pacifica</i>	Winter
Red Throated Loon *	<i>Gavia stellata</i>	Winter
Grebes		
Pied Billed Grebe	<i>Podilymbus podiceps</i>	Year Round
Horned Grebe	<i>Podiceps auritus</i>	Winter
Eared Grebe	<i>Podiceps nigricollis</i>	Winter
Rails, Gallinules, & Coots		
King Rail *	<i>Rallus elegans</i>	Summer
Black Rail *	<i>Laterallus jamaicensis</i>	Summer
Virginia Rail	<i>Rallus limicola</i>	Winter
Common Moorhen	<i>Gallinula chloropus</i>	Winter
Purple Gallinule	<i>Porphyrio martinica</i>	Winter
American Coot	<i>Fulica americana</i>	Winter
Cormorants, Waders, Pelicans, & Darters		
Double-crested Cormorant	<i>Phalacrocorax auritus</i>	Year Round
Great Egret	<i>Ardea alba</i>	Summer
Great Blue Heron	<i>Ardea herodias</i>	Summer
Green Heron	<i>Butorides virescens</i>	Summer
White Ibis	<i>Eudocimus albus</i>	Summer
Least Bittern*	<i>Ixobryhus exilis</i>	Summer
American Bittern *	<i>Botaurus lentiginosus</i>	Winter
Cattle Egret	<i>Bubulcus ibis</i>	Summer
Little Blue Heron	<i>Egretta caerulea</i>	Summer
Snowy Egret	<i>Egretta thula</i>	Summer
Black crowned Night Heron	<i>Nycticorax nycticorax</i>	Summer
Yellow crowned Night Heron	<i>Nycticorax violacea</i>	Summer
Wood Stork*	<i>Mycteria americana</i>	Late Summer
Brown Pelican	<i>Pelecanus occidentalis</i>	Winter
White Pelican	<i>Pelecanus erythrorhynchos</i>	Winter
Anhinga	<i>Anhinga anhinga</i>	Summer

Birds Continued

Common Name	Scientific Name	Season
Kingfisher		
Belted Kingfisher	<i>Megaceryle alcyon</i>	Year Round
Swifts		
Chimney Swift	<i>Chaetura pelagica</i>	Summer
Hummingbird		
Ruby-throated Hummingbird	<i>Archilochus colubris</i>	Summer
Nightjars		
Chuck-will's-widow	<i>Caprimulgus carolinensis</i>	Summer
Whip-poor-will*	<i>Caprimulgus vociferus</i>	Summer
Common Nighthawk	<i>Chordeiles minor</i>	Summer
Plovers & Sandpipers		
Killdeer	<i>Charadrius vociferus</i>	Year Round
Willet *	<i>Tringa semipalmata</i>	Winter
Greater Yellowlegs	<i>Tringa melanoleuca</i>	Winter
Lesser Yellowlegs*	<i>Tringa flavipes</i>	Winter
Dunlin *	<i>Calidris alpinarctica</i>	Winter
Semipalmated Sandpiper	<i>Calidris pusilla</i>	Winter
Least Sandpiper	<i>Calidris minutilla</i>	Winter
Spotted Sandpiper	<i>Actitis macularius</i>	Winter
Upland Sandpiper	<i>Bartramia longicauda</i>	Winter
American Woodcock	<i>Scolopax minor</i>	Year Round
Wilson's Snipe	<i>Gallinago delicata</i>	Winter
Long-billed Dowitcher	<i>Limnodromus scolopaceus</i>	Winter
Short-billed Dowitcher *	<i>Limnodromus griseus</i>	Winter
Ruddy Turnstone *	<i>Arenaria interpres</i>	Winter
Gulls		
Bonaparte's Gull	<i>Chroicocephalus philadelphia</i>	Winter
Herring Gull	<i>Larus argentatus</i>	Winter
Ring-billed Gull	<i>Larus delawarensis</i>	Winter
Lesser Black-backed Gull	<i>Larus fuscus</i>	Winter
Vultures, Hawks, Harriers, Kites, Falcons, Osprey & Eagles		
Turkey Vulture	<i>Cathartes aura</i>	Year Round
Black Vulture	<i>Coragyps atratus</i>	Year Round
Cooper's Hawk	<i>Accipiter cooperii</i>	Year Round
Sharp-shinned Hawk	<i>Accipiter striatus</i>	Winter
Red-tailed Hawk	<i>Buteo jamaicensis</i>	Year Round
Broad-winged Hawk	<i>Buteo platypterus</i>	Summer
Red-shouldered Hawk	<i>Buteo lineatus</i>	Year Round
Northern Harrier	<i>Circus cyaneus</i>	Winter
Swallow-tailed Kite *	<i>Elanoides forficatus</i>	Summer

Vultures, Hawks, Harriers, Kites, Falcons, Osprey & Eagles Continued

Common Name	Scientific Name	Season
Mississippi Kite	<i>Ictinia mississippiensis</i>	Summer
Peregrine Falcon *	<i>Falco peregrinus</i>	Winter
American Kestrel *	<i>Falco sparverius</i>	Year Round
Osprey	<i>Pandion haliaetus</i>	Year Round
Bald Eagle*	<i>Haliaeetus leucocephalus</i>	Year Round
Golden Eagle *	<i>Aquila chrysaetos</i>	Year Round
Pigeons and Doves		
Mourning Dove	<i>Zenaida macroura</i>	Year Round
Common Ground Dove*	<i>Columbina passerina</i>	Year Round
Eurasian Collared - Dove	<i>Streptopelia decaocto</i>	Year Round
Rock Pigeon	<i>Columba livia</i>	Year Round
Cuckoos		
Yellow-billed Cuckoo	<i>Coccyzus americanus</i>	Summer
Turkeys and New World Quail		
Northern Bobwhite	<i>Colinus virginianus</i>	Year Round
Wild Turkey	<i>Meleagris gallopavo</i>	Year Round
Waxwings		
Cedar Waxwing	<i>Bombycilla cedrorum</i>	Winter
Sparrows, Grosbeaks, Buntings, & Old World Sparrows		
Eastern Towhee	<i>Pipilo erythrophthalmus</i>	Year Round
Bachman's Sparrow *	<i>Aimophila aestivalis</i>	Year Round
Swamp Sparrow	<i>Melospiza georgiana</i>	Winter
Savannah Sparrow	<i>Passerculus sandwichensis</i>	Winter
Fox Sparrow	<i>Passerella iliaca</i>	Winter
Vesper Sparrow	<i>Poocetes gramineus</i>	Winter
Chipping Sparrow	<i>Spizella passerine</i>	Year Round
White-throated Sparrow	<i>Zonotrichia albicollis</i>	Winter
White-crowned Sparrow	<i>Zonotrichia leucophrys</i>	Winter
Field Sparrow	<i>Spizella pusilla</i>	Year Round
Grasshopper Sparrow	<i>Ammodramus savannarum</i>	Year Round
Song Sparrow	<i>Melospiza melodia</i>	Year Round
White-throated Sparrow	<i>Zonotrichia albicollis</i>	Winter
Henslow's Sparrow *	<i>Ammodramus henslowii</i>	Winter
LeConte's Sparrow*	<i>Ammodramus leconteii</i>	Winter
Nelson's Sparrow *	<i>Ammodramus nelsoni</i>	Winter
Dark-eyed Junco	<i>Junco hyemalis</i>	Winter
Northern Cardinal	<i>Cardinalis cardinalis</i>	Year Round
Blue Grosbeak	<i>Passerina caerulea</i>	Year Round
Indigo Bunting	<i>Passerina cyanea</i>	Summer
Painted Bunting*	<i>Passerina ciris</i>	Summer
Dickcissel	<i>Spiza americana</i>	Winter
House Sparrow	<i>Passer domesticus</i>	Year Round

Birds Continued

Common Name	Scientific Name	Season
Crows & Jays		
American Crow	<i>Corvus brachyrhynchos</i>	Year Round
Fish Crow	<i>Corvus ossifragus</i>	Year Round
Blue Jay	<i>Cyanocitta cristata</i>	Year Round
Finches		
American Goldfinch	<i>Carduelis tristis</i>	Year Round
House Finch	<i>Carpodacus mexicanus</i>	Year Round
Purple Finch	<i>Carpodacus purpureus</i>	Winter
Pine Siskin	<i>Spinus pinus</i>	Winter
Blackbirds and Orioles		
Bobolink	<i>Dolichonyx oryzivorus</i>	Winter
Red-winged Blackbird	<i>Agelaius phoeniceus</i>	Summer
Rusty Blackbird *	<i>Euphagus carolinus</i>	Winter
Orchard Oriole	<i>Icterus spurius</i>	Summer
Brown-headed Cowbird	<i>Molothrus ater</i>	Summer
Common Grackle	<i>Quiscalus quiscula</i>	Summer
Eastern Meadowlark	<i>Sturnella magna</i>	Summer
Shrikes		
Loggerhead Shrike*	<i>Lanius ludovicianus</i>	Summer
Mockingbirds and Thrashers		
Northern Mockingbird	<i>Mimus polyglottos</i>	Year Round
Brown Thrasher	<i>Toxostoma rufum</i>	Year Round
Gray Catbird	<i>Dumetella carolinensis</i>	Year Round
Chickadees and Titmice		
Tufted Titmouse	<i>Baeolophus bicolor</i>	Year Round
Carolina Chickadee	<i>Poecile carolinensis</i>	Year Round
Wood Warblers		
Pine Warbler	<i>Dendroica pinus</i>	Year Round
Yellow-breasted Chat	<i>Icteria virens</i>	Summer
Prothonotary Warbler *	<i>Protonotaria citrea</i>	Summer
American Redstart	<i>Setophaga ruticilla</i>	Summer
Hooded Warbler	<i>Wilsonia citrina</i>	Summer
Ovenbird	<i>Seiurus aurocapilla</i>	Summer
Louisiana Waterthrush	<i>Seiurus motacilla</i>	Summer
Black-and-White Warbler	<i>Mniotilta varia</i>	Summer
Kentucky Warbler *	<i>Oporornis formosus</i>	Summer
Common Yellowthroat	<i>Geothlypis trichas</i>	Summer
Hooded Warbler	<i>Wilsonia citrina</i>	Summer
Northern Parula	<i>Parula americana</i>	Summer
Yellow-throated Warbler	<i>Dendroica dominica</i>	Summer
Prairie Warbler *	<i>Dendroica discolor</i>	Summer

Wood Warblers Continued

Common Name	Scientific Name	Season
Yellow-rumped Warbler	<i>Dendroica coronata</i>	Winter
Blue-winged Warbler *	<i>Vermivora pinus</i>	Summer
Cerulean Warbler *	<i>Dendroica cerulea</i>	Summer
Palm Warbler	<i>Dendroica palmarum</i>	Winter
Swainson's Warbler*	<i>Limnothlypis swainsonii</i>	Summer
Orange-crowned Warbler	<i>Vermivora celata</i>	Winter
Tanagers		
Summer Tanager	<i>Piranga rubra</i>	Summer
Scarlet Tanager	<i>Piranga olivacea</i>	Summer
Gnatcatchers, Kinglets, & Thrushes		
Ruby-crowned Kinglet	<i>Regulus calendula</i>	Winter
Golden-crowned Kinglet	<i>Regulus strapa</i>	Winter
Blue-gray Gnatcatcher	<i>Polioptila caerulea</i>	Summer
Wood Thrush*	<i>Hylocichla mustelina</i>	Summer
Eastern Bluebird	<i>Sialia sialis</i>	Year Round
Hermit Thrush	<i>Catharus guttatus</i>	Winter
American Robin	<i>Turdus migratorius</i>	Year Round
Nuthatches and Creepers		
White-breasted Nuthatch	<i>Sitta carolinensis</i>	Year Round
Red-breasted Nuthatch	<i>Sitta canadensis</i>	Winter
Brown-headed Nuthatch*	<i>Sitta pusilla</i>	Year Round
Brown Creeper	<i>Certhia americana</i>	Winter
Starlings		
European Starling	<i>Sturnus vulgaris</i>	Year Round
Wren, Pipits, & Larks		
Carolina Wren	<i>Thryothorus ludovicianus</i>	Year Round
House Wren	<i>Troglodytes aedon</i>	Winter
Winter Wren	<i>Troglodytes troglodytes</i>	Winter
Sedge Wren*	<i>Cistothorus platensis</i>	Winter
Marsh Wren	<i>Cistothorus palustris</i>	Winter
American Pipit	<i>Anthus rubescens</i>	Winter
Horned Lark	<i>Eremophila alpestris</i>	Winter
Flycatchers		
Eastern Wood Pewee	<i>Contopus virens</i>	Summer
Acadian Flycatcher	<i>Empidonax virescens</i>	Summer
Great Crested Flycatcher	<i>Myiarchus crinitus</i>	Summer
Eastern Phoebe	<i>Sayornis phoebe</i>	Summer
Eastern Kingbird	<i>Tyrannus tyrannus</i>	Summer

Birds Continued

Common Name	Scientific Name	Season
Vireos		
Red-eyed Vireo	<i>Vireo olivaceus</i>	Summer
White-eyed Vireo	<i>Vireo Grieus</i>	Summer
Yellow-Throated Vireo	<i>Vireo flavifrons</i>	Summer
Blue-headed Vireo	<i>Vireo solitaries</i>	Winter
Woodpeckers		
Pileated Woodpecker	<i>Dryocopus pileatus</i>	Year Round
Red-bellied Woodpecker	<i>Melanerpes carolinus</i>	Year Round
Red-headed Woodpecker *	<i>Melanerpes erythrocephalus</i>	Year Round
Downy Woodpecker	<i>Picoides pubescens</i>	Year Round
Hairy Woodpecker	<i>Picoides villosus</i>	Year Round
Yellow-bellied Sapsucker	<i>Sphyrapicus varius</i>	Winter
Northern Flicker	<i>Colaptes auratus</i>	Year Round
Red-cockaded Woodpecker X	<i>Picoides borealis</i>	Year Round
Owls		
Great Horned Owl	<i>Bubo virginianus</i>	Year Round
Eastern Screech-Owl	<i>Megascops asio</i>	Year Round
Barred Owl	<i>Strix varia</i>	Year Round
Barn Owl	<i>Tyto alba</i>	Year Round
Swallows		
Tree Swallow	<i>Tachycineta bicolor</i>	Summer
Northern Rough-winged Swallow	<i>Stelgidopteryx serripennis</i>	Summer
Purple Martin	<i>Progne subis</i>	Summer
Cliff Swallow	<i>Petrochelidon pyrrhonota</i>	Summer
Barn Swallow	<i>Hirundo Rustica</i>	Summer
<p>* - Identified as species of concern under the Migratory Bird Treaty Act X - possible, not found on project, Compiled from "Georgia Breeding Bird Atlas", Georgia Ornithological Society Records, UGA Museum of Natural History Records, Peterson Field Guide (2010) – Range maps, and field observations.</p>		

Mammals

Common Name	Scientific Name
Hispid Cotton Rat	<i>Sigmodon hispidus</i>
Golden Mouse	<i>Ochrotomys nuttalli</i>
Eastern Harvest Mouse	<i>Reithrodontomys humulis</i>
White-footed Mouse	<i>Peromyscus leucopus</i>
Cotton Mouse	<i>Peromyscus gossypinus</i>
Common Muskrat	<i>Ondatra zibethicus</i>

Mammals Continued

Common Name	Scientific Name
Oldfield Mouse	<i>Peromyscus polionotus</i>
Southern Flying Squirrel	<i>Glaucomys volans</i>
Eastern Gray Squirrel	<i>Sciurus carolinensis</i>
Eastern Fox Squirrel	<i>Sciurus niger</i>
Eastern Chipmunk	<i>Tamias striatus</i>
Southern Short-tailed Shrew	<i>Blarina carolinensis</i>
Least Shrew	<i>Cryptotis parva</i>
Eastern Mole	<i>Scalopus aquaticus</i>
Eastern Cottontail	<i>Sylvilagus aquaticus</i>
Swamp Rabbit	<i>Sylvilagus floridanus</i>
Eastern Pipistrille	<i>Pipistrellus subflavus</i>
Rafineques Big Eared bat	<i>Corynorhinus rafinesquii</i>
Southeastern Myotis	<i>Myotis austroriparius</i>
Big Brown Bat	<i>Eptesicus fuscus</i>
Little Brown Bat	<i>Myotis lucifugus</i>
Silver-haired Bat	<i>Lasionycteris noctivagans</i>
Eastern Red Bat	<i>Lasiurus borealis</i>
Hoary Bat	<i>Lasiurus cinereus</i>
Seminole Bat	<i>Lasiurus seminolus</i>
Evening Bat	<i>Pipistrellus subflavus</i>
Coyote	<i>Canis latrans</i>
Gray Fox	<i>Urocyon cinereoargenteus</i>
Red Fox	<i>Vulpes vulpes</i>
Bobcat	<i>Lynx rufus</i>
Striped Skunk	<i>Mephitis mephitis</i>
Spotted Skunk	<i>Spilogale putorius</i>
Long-tailed Weasel	<i>Mustela frenata</i>
Mink	<i>Mustela vison</i>
Northern Raccoon	<i>Procyon lotor</i>
Northern River Otter	<i>Lontra canadensis</i>
Virginia Opossum	<i>Didelphis virginiana</i>
American Beaver	<i>Castor canadensis</i>
Nine-banded Armadillo	<i>Dasypus novemcinctus</i>
White-tailed Deer	<i>Odocoileus virginianus</i>

Reptiles

Common Name	Scientific Name
Snakes	
Eastern Black Racer	<i>Coluber constrictor</i>
Corn Snake	<i>Elaphe guttata</i>
Rat Snake	<i>Elaphe obsoleta</i>

Snakes Continued

Common Name	Scientific Name
Eastern Hognose Snake	<i>Heterodon platirhinos</i>
Southern Hognose	<i>Heterodon simus</i>
Mole Snake	<i>Lampropeltis calligaster</i>
Eastern King Snake	<i>Lampropeltis getula</i>
Scarlet King	<i>Lampropeltis triangulum elapsoides</i>
Brown Snake	<i>Storeria dekayi</i>
Coachwhip	<i>Masticophis flagellum</i>
Plain-bellied Watersnake	<i>Nerodia erythrogaster</i>
Northern Watersnake	<i>Nerodia sipedon</i>
Brown Watersnake	<i>Nerodia taxispilota</i>
Rough Green Snake	<i>Opeodrys aestivus</i>
Queen Snake	<i>Regina septemvittata</i>
Red-bellied Snake	<i>Storeria occipitomaculata</i>
Southeastern Crowned Snake	<i>Tantila coronata</i>
Eastern Ribbon Snake	<i>Thamnophis suaritus</i>
Common Garter Snake	<i>Thamnophis sirtalis</i>
Rough Earth Snake	<i>Virginia striatula</i>
Smooth Earth Snake	<i>Virginia valeriae</i>
Copperhead	<i>Agkistrodon contortrix</i>
Cottonmouth	<i>Agkistrodon piscivorus</i>
Timber Rattlesnake	<i>Crotalus horridus</i>
Pygmy Rattlesnake	<i>Sistrurus miliarius</i>
Lizards	
Eastern Fence Lizard	<i>Sceloporus undulatus</i>
Green Anole	<i>Anolis carolinensis</i>
Five-lined Skink	<i>Eumeces fasciatus</i>
Southeastern Five-lined Skink	<i>Eumeces inexpectatus</i>
Six-lined Racerunner	<i>Cnemidophorus sexlineatus</i>
Slender Glass Lizard	<i>Ophisaurus attenuatus</i>
Eastern Glass Lizard	<i>Ophisaurus ventralis</i>
Broadhead Skink	<i>Eumeces laticeps</i>
Ground Skink	<i>Scincella lateralis</i>
American Alligator	<i>Alligator mississippiensis</i>
Turtles	
Common Snapping Turtle	<i>Chelydra serpentina</i>
Eastern Box Turtle	<i>Terrapene carolina</i>
Pond Slider	<i>Trachemys scripta</i>
Painted Turtle	<i>Chrysemys picta</i>

Turtles Continued

Common Name	Scientific Name
River Cooter	<i>Pseudemys coninna</i>
Eastern Musk Turtle	<i>Kinosternon subrubrum</i>
Common Musk Turtle	<i>Sternotherus odoratus</i>
Spiny Softshell	<i>Apalone spinifera</i>
Amphibians	
Frogs and Toads	
American Toad	<i>Bufo americanus</i>
Fowler's Toad	<i>Bufo fowleri</i>
Northern Cricket Frog	<i>Acris crepitans</i>
Bird-voiced Treefrog	<i>Hyla avivoca</i>
Cope's Gray Treefrog	<i>Hyla chrysoscelis</i>
Green Treefrog	<i>Hyla cinerea</i>
Barking Treefrog	<i>Hyla gratiosa</i>
Squirrel Treefrog	<i>Hyla squirella</i>
Spring Peeper	<i>Pseudacris crucifer</i>
Upland Chorus Frog	<i>Pseudacris feriarum</i>
Southern Chorus Frog	<i>Pseudacris nigrita</i>
Eastern Narrowmouth Toad	<i>Gastrophryne carolinensis</i>
Eastern Spadefoot Toad	<i>Scaphiopus holbrookii</i>
Bullfrog	<i>Rana catesbeiana</i>
Green Frog / Bronze Frog	<i>Rana clamitans</i>
Pickerel Frog	<i>Rana palustris</i>
Southern Leopard Frog	<i>Rana sphenoccephala</i>
Salamanders	
Spotted Salamander	<i>Ambystoma maculatum</i>
Marbled Salamander	<i>Ambystoma opacum</i>
Mole Salamander	<i>Ambystoma talpoideum</i>
Two-toed Amphiuma	<i>Amphiuma means</i>
Spotted Dusky Salamander	<i>Desmognathus conanti</i>
Two-lined Salamander	<i>Eueycea bislineata complex</i>
Three-lined Salamander	<i>Eueycea guttolineatta</i>
Atlantic Coast Slimy Salamander	<i>Plethodon chlorobryonis</i>
Savannah Slimy Salamander	<i>Plethodon savannah</i>
Mud Salamander	<i>Pseudotriton montanus</i>
Red Salamander	<i>Pseudotriton ruber</i>
**Compiled utilizing "Amphibians and Reptiles of Georgia" and the UGA Museum of Natural History Records website	

Fish

Common Name	Scientific Name
Game Fish	
Bass	<i>Moronidae</i>
Striped bass*	<i>Morone saxatilis</i>
White bass	<i>Morone chrysops</i>
Hybrid bass*	<i>Morone saxatilis</i> x <i>Morone chrysops</i>
White perch	<i>Morone americana</i>
Sunfish	<i>Centrarchidae</i>
Largemouth bass	<i>Micropterus salmoides</i>
Spotted bass	<i>Micriopterus punctulatus</i>
Redeye bass	<i>Micropterus coosae</i>
Black crappie	<i>Pomoxis nigromaculatus</i>
White crappie	<i>Pomoxis annularis</i>
Bluegill	<i>Lepomis macrochirus</i>
Redbreast	<i>Lepomis auritus</i>
Green sunfish	<i>Lepomis cyanellus</i>
Pumpkinseed	<i>Lepomis gibbosus</i>
Flier	<i>Centrarchus macropterus</i>
Warmouth	<i>Chaenobryttus coronaris</i>
Redear	<i>Lepomis microlophus</i>
Perch	<i>Percidae</i>
Yellow perch	<i>Perca flavescens</i>
Rough Fish	
Catfish	<i>Ictaluridae</i>
Channel catfish	<i>Ictalurus punctatus</i>
White catfish	<i>Ictalurus catus</i>
Blue catfish	<i>Ictalurus furcatus</i>
Flat bullhead	<i>Ictalurus platycephalus</i>
Brown bullhead	<i>Ictalurus nebulosus</i>
Flathead catfish	<i>Pylodictis olivaris</i>
Other	
Longnose gar	<i>Lepospsteus osseus</i>
Chain pickerel (jack)	<i>Esox niger</i>
Redhorse sucker	<i>Maxostoma spp.</i>
Northern hogsucker	<i>Hypentelium nigricans</i>
Spotted sucker	<i>Minytrema melanops</i>
Forage Species	
Shad and herring	<i>Clupeidae</i>
Gizzard shad	<i>Dorosoma cepedianum</i>
Threadfin shad	<i>Dorosoma petenense</i>
Blueback herring	<i>Alosa aestivalis</i>

Forage Species Continued

Minnows	<i>Cyprinidae</i>
Common carp	<i>Cyprinus carpio</i>
Grass carp*	<i>Ctenopharyngodon idella</i>
Spottail shiner	<i>Notropis hudsonius</i>
Golden shiner	<i>Notemigonus chrysoleucas</i>
Livebearers	<i>Poeciliidae</i>
Mosquito fish	<i>Gambusia affinis</i>

* Stocked Species

APPENDIX B

APPLICABLE PUBLIC LAWS (P.L.)

STATUTE	DESCRIPTION
P.L. 59-209, THE ANTIQUITIES ACT OF 1906	THE FIRST FEDERAL LAW ESTABLISHED TO PROTECT WHAT ARE NOW KNOWN AS "CULTURAL RESOURCES" ON PUBLIC LANDS. IT PROVIDES A PERMIT PROCEDURE FOR INVESTIGATING "ANTIQUITIES" AND CONSISTS OF TWO PARTS: AN ACT FOR THE PRESERVATION OF AMERICAN ANTIQUITIES, AND UNIFORM RULES AND REGULATIONS.
P.L. 74-292, THE HISTORIC SITES ACT OF 1935	DECLARES IT TO BE A NATIONAL POLICY TO PRESERVE FOR (IN CONTRAST TO PROTECTING FROM) THE PUBLIC, HISTORIC (INCLUDING PREHISTORIC) SITES, BUILDINGS, AND OBJECTS OF NATIONAL SIGNIFICANCE. THIS ACT PROVIDES BOTH AUTHORIZATION AND A DIRECTIVE FOR THE SECRETARY OF THE INTERIOR, THROUGH THE NATIONAL PARK SERVICE, TO ASSUME A POSITION OF NATIONAL LEADERSHIP IN THE AREA OF PROTECTING, RECOVERING, AND INTERPRETING NATIONAL ARCHEOLOGICAL HISTORIC RESOURCES. IT ALSO ESTABLISHES AN "ADVISORY BOARD ON NATIONAL PARKS; HISTORIC SITES, BUILDINGS, AND MONUMENTS, A COMMITTEE OF ELEVEN EXPERTS APPOINTED BY THE SECRETARY TO RECOMMEND POLICIES TO THE DEPARTMENT OF THE INTERIOR".
P.L. 75-761, THE FLOOD CONTROL ACT OF 1938	THIS ACT AUTHORIZES THE CONSTRUCTION, REPAIR, AND PRESERVATION OF CERTAIN PUBLIC WORKS ON RIVERS AND HARBORS FOR NAVIGATION, FLOOD CONTROL, AND FOR OTHER PURPOSES.
16 U.S. CODE §§ 668-668A-D, THE BALD EAGLE PROTECTION ACT OF 1940, AS AMENDED	THIS ACT PROHIBITS ANYONE, WITHOUT A PERMIT ISSUED BY THE SECRETARY OF THE INTERIOR, FROM TAKING BALD EAGLES, INCLUDING THEIR PARTS, NESTS, OR EGGS. THE ACT PROVIDES CRIMINAL PENALTIES FOR PERSONS WHO TAKE, POSSESS, SELL, PURCHASE, BARTER, OFFER TO SELL, TRANSPORT, EXPORT OR IMPORT, AT ANY TIME OR ANY MANNER, ANY BALD EAGLE [OR ANY GOLDEN EAGLE], ALIVE OR DEAD, OR ANY PART, NEST, OR EGG THEREOF. THE ACT DEFINES "TAKE" AS PURSUE, SHOOT, SHOOT AT, POISON, WOUND, KILL, CAPTURE, TRAP, COLLECT, MOLEST, OR DISTURB
P.L. 78-534, FLOOD CONTROL ACT OF 1944	SECTION 4 OF THE ACT AS LAST AMENDED IN 1962 BY SECTION 207 OF P.L. 87-874 AUTHORIZES USACE TO CONSTRUCT, MAINTAIN, AND OPERATE PUBLIC PARKS AND RECREATIONAL FACILITIES IN RESERVOIR AREAS AND TO GRANT LEASES AND LICENSES FOR LANDS, INCLUDING FACILITIES, PREFERABLY TO FEDERAL, STATE OR LOCAL GOVERNMENTAL AGENCIES
P.L. 79-525, RIVER AND HARBOR ACT OF 1946	THIS ACT AUTHORIZES THE CONSTRUCTION, REPAIR, AND PRESERVATION OF CERTAIN PUBLIC WORKS ON RIVERS AND HARBORS FOR NAVIGATION, FLOOD CONTROL, AND FOR OTHER PURPOSES
P.L. 83-780, FLOOD CONTROL ACT OF 1954	THIS ACT AUTHORIZES THE CONSTRUCTION, MAINTENANCE, AND OPERATION OF A PUBLIC PARK AND RECREATIONAL FACILITIES IN RESERVOIR AREAS UNDER THE CONTROL OF THE DEPARTMENT OF THE ARMY AND AUTHORIZES THE SECRETARY OF THE ARMY TO GRANT LEASES OF LANDS IN RESERVOIR AREAS DEEMED TO BE IN THE PUBLIC INTEREST

<p>P.L. 85-624, FISH AND WILDLIFE COORDINATION ACT 1958</p>	<p>THIS ACT AS AMENDED IN 1965 SETS DOWN THE GENERAL POLICY THAT FISH AND WILDLIFE CONSERVATION SHALL RECEIVE EQUAL CONSIDERATION WITH OTHER PROJECT PURPOSES AND BE COORDINATED WITH OTHER FEATURES OF WATER RESOURCE DEVELOPMENT PROGRAMS. OPPORTUNITIES FOR IMPROVING FISH AND WILDLIFE RESOURCES AND ADVERSE EFFECTS ON THESE RESOURCES SHALL BE EXAMINED ALONG WITH OTHER PURPOSES WHICH MIGHT BE SERVED BY WATER RESOURCES DEVELOPMENT</p>
<p>P.L. 86-523, RESERVOIR SALVAGE ACT OF 1960, AS AMENDED</p>	<p>THIS ACT PROVIDES FOR: (1) THE PRESERVATION OF HISTORICAL AND ARCHEOLOGICAL DATA THAT MIGHT OTHERWISE BE LOST OR DESTROYED AS THE RESULT OF FLOODING OR ANY ALTERATION OF THE TERRAIN CAUSED AS A RESULT OF ANY FEDERAL RESERVOIR CONSTRUCTION PROJECTS; (2) COORDINATION WITH THE SECRETARY OF THE INTERIOR WHENEVER ACTIVITIES MAY CAUSE LOSS OF SCIENTIFIC, PREHISTORIC, OR ARCHEOLOGICAL DATA; AND (3) EXPENDITURE OF FUNDS FOR RECOVERY, PROTECTION, AND DATA PRESERVATION. THIS ACT WAS AMENDED BY P.L. 93-291</p>
<p>P.L. 86-717, FOREST COVER ACT</p>	<p>THE FOREST COVER ACT PROVIDES A STATUTORY MANDATE FOR MULTIPLE USE FOREST MANAGEMENT AND TO PROVIDE FOR THE CONTINUED PRODUCTION AND HARVEST OF FOREST PRODUCTS THROUGH SUSTAINED YIELD PROGRAMS, REFORESTATION, AND ACCEPTED CONSERVATION PRACTICES. THE ACT PROVIDES FOR THE PROTECTION, CONSERVATION, MAINTENANCE, AND DEVELOPMENT OF OTHER VEGETATIVE COVER TYPES SUCH AS WETLANDS AND GRASSLANDS. THE FOREST COVER ACT ALSO PROVIDES AUTHORITY FOR THE USACE TO MANAGE PROJECT LANDS AND WATERS FOR ANY OR ALL CONSERVATION PURPOSES, INCLUDING FISH AND WILDLIFE CONSERVATION</p>
<p>P.L. 87-874, RIVERS AND HARBORS ACT OF 1962</p>	<p>THIS ACT AUTHORIZES THE CONSTRUCTION, REPAIR, AND PRESERVATION OF CERTAIN PUBLIC WORKS ON RIVERS AND HARBORS FOR NAVIGATION, FLOOD CONTROL, AND FOR OTHER PURPOSES</p>
<p>P.L. 88-578, LAND AND WATER CONSERVATION FUND ACT OF 1965</p>	<p>THIS ACT ESTABLISHED A FUND FROM WHICH CONGRESS CAN MAKE APPROPRIATIONS FOR OUTDOOR RECREATION. SECTION 2(2) MAKES ENTRANCE AND USER FEES AT RESERVOIRS POSSIBLE BY DELETING THE WORDS "WITHOUT CHARGE" FROM SECTION 4 OF THE 1944 FLOOD CONTROL ACT AS AMENDED</p>
<p>P.L. 89-90, WATER RESOURCES PLANNING ACT OF 1965</p>	<p>THIS ACT ESTABLISHED THE WATER RESOURCES COUNCIL AND GIVES IT THE RESPONSIBILITY TO ENCOURAGE THE DEVELOPMENT, CONSERVATION, AND USE OF THE NATION'S WATER AND RELATED LAND RESOURCES ON A COORDINATED AND COMPREHENSIVE BASIS</p>

<p>P.L. 89-665, NATIONAL HISTORIC PRESERVATION ACT OF 1966</p>	<p>THIS ACT PROVIDES FOR: (1) AN EXPANDED NATIONAL REGISTER OF SIGNIFICANT SITES AND OBJECTS AND THE (2) ESTABLISHMENT OF AN ADVISORY COUNCIL ON HISTORIC PRESERVATION. IT DOES NOT PREVENT AN ACTION BUT MANDATES PROCEDURAL STEPS IN CONSIDERATION OF EFFECTS TO HISTORIC PROPERTIES, INCLUDING SURVEY, EVALUATION/TESTING, AND MITIGATION. SECTION 106 REQUIRES FEDERAL AGENCIES TO CONSIDER THE EFFECTS ON HISTORIC PROPERTIES OF THEIR UNDERTAKINGS AND REQUIRES THAT THE PRESIDENT'S ADVISORY COUNCIL ON HISTORIC PRESERVATION HAVE AN OPPORTUNITY TO COMMENT ON ANY UNDERTAKING WHICH ADVERSELY AFFECTS PROPERTIES LISTED, NOMINATED, OR CONSIDERED IMPORTANT ENOUGH TO BE INCLUDED ON THE NATIONAL REGISTER OF HISTORIC PLACES</p>
<p>P.L. 90-483, RIVER AND HARBOR AND FLOOD CONTROL ACT OF 1968, MITIGATION OF SHORE DAMAGES</p>	<p>SECTION 210 RESTRICTED COLLECTION OF ENTRANCE FEE AT USACE LAKES AND RESERVOIRS TO USERS OF HIGHLY DEVELOPED FACILITIES REQUIRING CONTINUOUS PRESENCE OF PERSONNEL</p>
<p>P.L. 91-190, NATIONAL ENVIRONMENTAL POLICY ACT OF 1969 (NEPA)</p>	<p>NEPA DECLARED A "CONTINUING POLICY OF THE FEDERAL GOVERNMENT TO USE ALL PRACTICABLE MEANS AND MEASURES TO FOSTER AND PROMOTE THE GENERAL WELFARE, TO CREATE CONDITIONS UNDER WHICH MAN AND NATURE CAN EXIST IN PRODUCTIVE HARMONY, AND FULFILL THE SOCIAL, ECONOMIC, AND OTHER REQUIREMENTS OF PRESENT AND FUTURE GENERATIONS OF AMERICANS." SECTION 102 AUTHORIZED AND DIRECTED THAT, TO THE FULLEST EXTENT POSSIBLE, THE POLICIES, REGULATIONS AND PUBLIC LAW OF THE UNITED STATES SHALL BE INTERPRETED AND ADMINISTERED IN ACCORDANCE WITH THE POLICIES OF THE ACT</p>
<p>P.L. 91-611, RIVER AND HARBOR AND FLOOD CONTROL ACT OF 1970</p>	<p>SECTION 234 PROVIDES THAT PERSONS DESIGNATED BY THE CHIEF OF ENGINEERS SHALL HAVE AUTHORITY TO ISSUE A CITATION FOR VIOLATIONS OF REGULATIONS AND RULES OF THE SECRETARY OF THE ARMY, PUBLISHED IN THE CODE OF FEDERAL REGULATIONS</p>
<p>P.L. 92-500, FEDERAL WATER POLLUTION CONTROL ACT AMENDMENTS OF 1972.</p>	<p>THE FEDERAL WATER POLLUTION CONTROL ACT OF 1948 (P.L. 845, 80TH CONGRESS), AS AMENDED IN 1956, 1961, 1965 AND 1970 (P.L. 91- 224), ESTABLISHED THE BASIC TENET OF UNIFORM STATE STANDARDS FOR WATER QUALITY. P.L. 92-500 STRONGLY AFFIRMS THE FEDERAL INTEREST IN THIS AREA. "THE OBJECTIVE OF THIS ACT IS TO RESTORE AND MAINTAIN THE CHEMICAL, PHYSICAL AND BIOLOGICAL INTEGRITY OF THE NATION'S WATERS."</p>
<p>P.L. 92-347, GOLDEN EAGLE PASSBOOK AND SPECIAL RECREATION USER FEES</p>	<p>THIS ACT REVISES P.L. 88-578, THE PUBLIC LAND AND WATER CONSERVATION ACT OF 1965, TO REQUIRE FEDERAL AGENCIES TO COLLECT SPECIAL RECREATION USER FEES FOR THE USE OF SPECIALIZED SITES DEVELOPED AT FEDERAL EXPENSE AND TO PROHIBIT THE USACE OF ENGINEERS FROM COLLECTING ENTRANCE FEES TO PROJECTS</p>
<p>P.L. 93-81, COLLECTION OF FEES FOR USE OF CERTAIN OUTDOOR RECREATION FACILITIES</p>	<p>THIS ACT AMENDS SECTION 4 OF THE LAND AND WATER CONSERVATION ACT OF 1965, AS AMENDED TO REQUIRE EACH FEDERAL AGENCY TO COLLECT SPECIAL RECREATION USE FEES FOR THE USE OF SITES, FACILITIES, EQUIPMENT, OR SERVICES FURNISHED AT FEDERAL EXPENSE</p>

<p>P.L. 93-205, CONSERVATION, PROTECTION, AND PROPAGATION OF ENDANGERED SPECIES ACT OF 1973, AS AMENDED</p>	<p>THIS LAW REPEALS THE ENDANGERED SPECIES CONSERVATION ACT OF 1969. IT ALSO DIRECTS ALL FEDERAL DEPARTMENTS/AGENCIES TO CARRY OUT PROGRAMS TO CONSERVE ENDANGERED AND THREATENED SPECIES OF FISH, WILDLIFE, AND PLANTS AND TO PRESERVE THE HABITAT OF THESE SPECIES IN CONSULTATION WITH THE SECRETARY OF THE INTERIOR. THIS ACT ESTABLISHES A PROCEDURE FOR COORDINATION, ASSESSMENT, AND CONSULTATION. THIS ACT WAS AMENDED BY P.L. 96-159</p>
<p>P.L. 93-291, ARCHEOLOGICAL CONSERVATION ACT OF 1974</p>	<p>THE SECRETARY OF THE INTERIOR SHALL COORDINATE ALL FEDERAL SURVEY AND RECOVERY ACTIVITIES AUTHORIZED UNDER THIS EXPANSION OF THE 1960 ACT. THE FEDERAL CONSTRUCTION AGENCY MAY TRANSFER UP TO ONE PERCENT OF PROJECT FUNDS TO THE SECRETARY WITH SUCH TRANSFERRED FUNDS CONSIDERED NON-REIMBURSABLE PROJECT COSTS</p>
<p>P.L. 93-303, RECREATION USE FEES</p>	<p>THIS ACT AMENDS SECTION 4 OF THE LAND AND WATER CONSERVATION ACT OF 1965, AS AMENDED, TO ESTABLISH LESS RESTRICTED CRITERIA UNDER WHICH FEDERAL AGENCIES MAY CHARGE FEES FOR THE USE OF CAMPGROUNDS DEVELOPED AND OPERATED AT FEDERAL AREAS UNDER THEIR CONTROL.</p>
<p>P.L. 94-422, AMENDMENT OF THE LAND AND WATER CONSERVATION FUND ACT OF 1965</p>	<p>EXPANDS THE ROLE OF THE ADVISORY COUNCIL. TITLE 2 - SECTION 102A AMENDS SECTION 106 OF THE HISTORICAL PRESERVATION ACT OF 1966 TO SAY THAT THE COUNCIL CAN COMMENT ON ACTIVITIES WHICH WILL HAVE AN ADVERSE EFFECT ON SITES EITHER INCLUDED IN OR ELIGIBLE FOR INCLUSION IN THE NATIONAL REGISTER OF HISTORIC PLACES</p>
<p>P.L. 95-217, CLEAN WATER ACT OF 1977, AS AMENDED</p>	<p>THIS ACT AMENDS THE FEDERAL WATER POLLUTION CONTROL ACT OF 1970 AND EXTENDS THE APPROPRIATIONS AUTHORIZATION. THE CLEAN WATER ACT IS A COMPREHENSIVE FEDERAL WATER POLLUTION CONTROL PROGRAM THAT HAS AS ITS PRIMARY GOAL THE REDUCTION AND CONTROL OF THE DISCHARGE OF POLLUTANTS INTO THE NATION'S NAVIGABLE WATERS. THE CLEAN WATER ACT OF 1977 HAS BEEN AMENDED BY THE WATER QUALITY ACT OF 1987, P.L. 100-4.</p>
<p>P.L. 95-341, AMERICAN INDIAN RELIGIOUS FREEDOM ACT OF 1978</p>	<p>THE ACT PROTECTS THE RIGHTS OF NATIVE AMERICANS TO EXERCISE THEIR TRADITIONAL RELIGIONS BY ENSURING ACCESS TO SITES, USE AND POSSESSION OF SACRED OBJECTS, AND THE FREEDOM TO WORSHIP THROUGH CEREMONIALS AND TRADITIONAL RITES</p>
<p>P.L. 95-632, ENDANGERED SPECIES ACT AMENDMENTS OF 1978</p>	<p>THIS LAW AMENDS THE ENDANGERED SPECIES ACT AMENDMENTS OF 1973. SECTION 7 DIRECTS AGENCIES TO CONDUCT A BIOLOGICAL ASSESSMENT TO IDENTIFY THREATENED OR ENDANGERED SPECIES THAT MAY BE PRESENT IN THE AREA OF ANY PROPOSED PROJECT. THIS ASSESSMENT IS CONDUCTED AS PART OF A FEDERAL AGENCY'S COMPLIANCE WITH THE REQUIREMENTS OF SECTION 102 OF NEPA</p>

<p>P.L. 96-95, ARCHEOLOGICAL RESOURCES PROTECTION ACT OF 1979</p>	<p>THIS ACT PROTECTS ARCHEOLOGICAL RESOURCES AND SITES THAT ARE ON PUBLIC AND TRIBAL LANDS AND FOSTERS INCREASED COOPERATION AND EXCHANGE OF INFORMATION BETWEEN GOVERNMENTAL AUTHORITIES, THE PROFESSIONAL ARCHEOLOGICAL COMMUNITY, AND PRIVATE INDIVIDUALS. IT ALSO ESTABLISHES REQUIREMENTS FOR ISSUANCE OF PERMITS BY THE FEDERAL LAND MANAGERS TO EXCAVATE OR REMOVE ANY ARCHEOLOGICAL RESOURCE LOCATED ON PUBLIC OR NATIVE AMERICAN LANDS</p>
<p>P.L. 98-63, SUPPLEMENTAL APPROPRIATIONS ACT OF 1983</p>	<p>THIS ACT AUTHORIZED THE USACE VOLUNTEER PROGRAM. THE UNITED STATES ARMY CHIEF OF ENGINEERS MAY ACCEPT THE SERVICES OF VOLUNTEERS AND PROVIDE FOR THEIR INCIDENTAL EXPENSES TO CARRY OUT ANY ACTIVITY OF USACE, EXCEPT POLICYMAKING OR LAW OR REGULATORY ENFORCEMENT</p>
<p>P.L. 99-662, THE WATER RESOURCES DEVELOPMENT ACT 1986</p>	<p>PROVIDES FOR THE CONSERVATION AND DEVELOPMENT OF WATER AND RELATED RESOURCES AND THE IMPROVEMENT AND REHABILITATION OF THE NATION'S WATER RESOURCES INFRASTRUCTURE</p>

Appendix C

Land Classification Maps

JST Land Classification Key Map



**US Army Corps
of Engineers®**
Savannah District

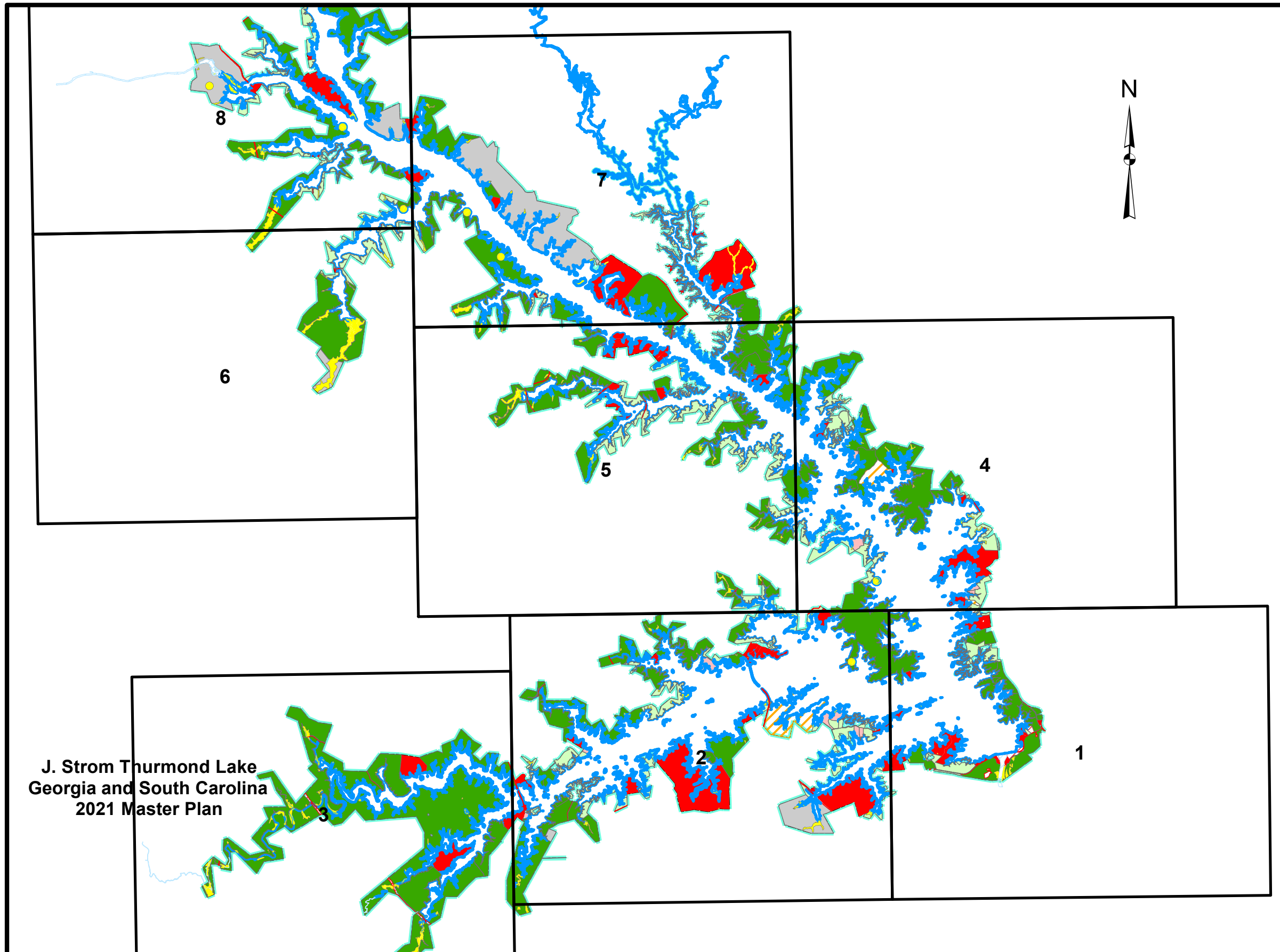


Location Map

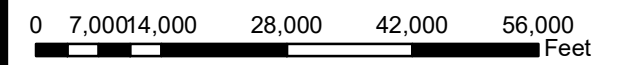
Legend

Land Classification

- Environmentally Sensitive Areas
- High Density Recreation
- Lake
- Low Density Recreation
- Mitigation
- Project Operations
- Recreation - Quasi_Private
- River
- Special Use
- Wildlife Mgt
- Property Line
- Zoning Index



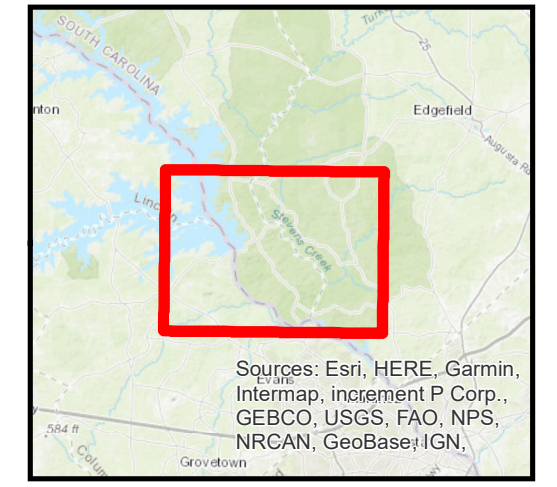
**J. Strom Thurmond Lake
Georgia and South Carolina
2021 Master Plan**



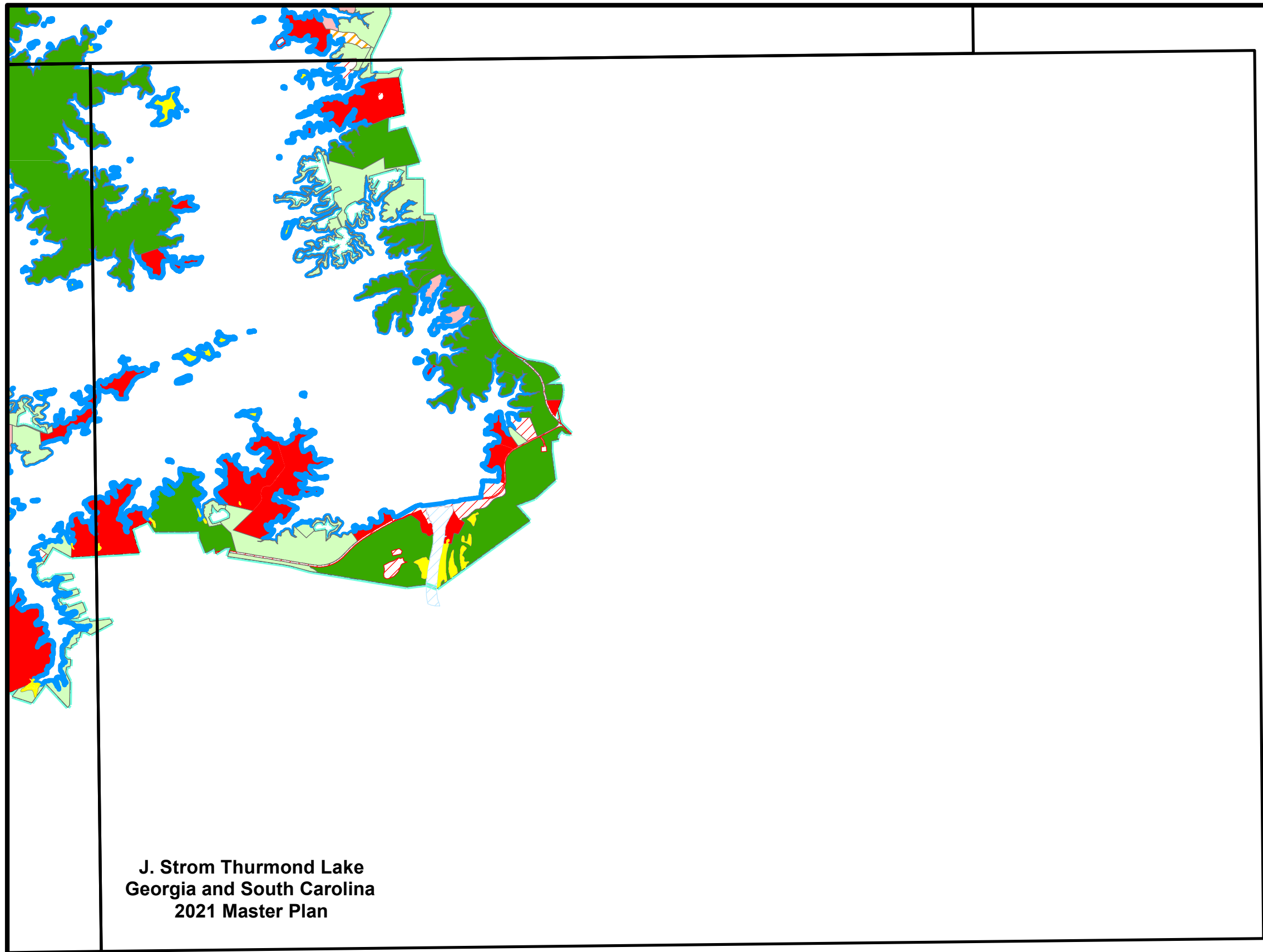
JST Land Classification Maps- Plate 1 of 8



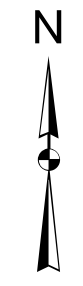
**US Army Corps
of Engineers®**
Savannah District



Location Map



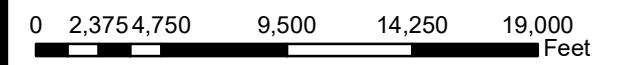
**J. Strom Thurmond Lake
Georgia and South Carolina
2021 Master Plan**



Legend

Land Classification

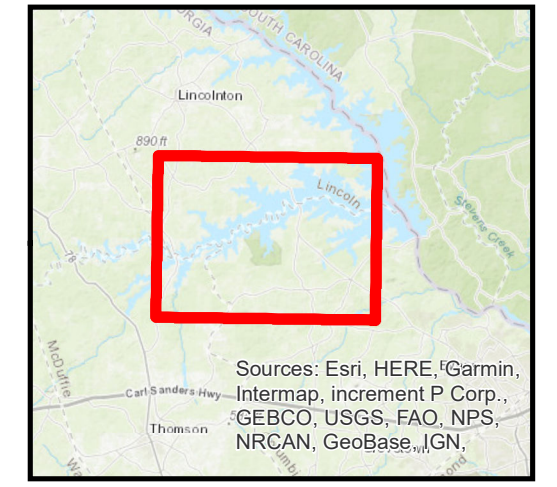
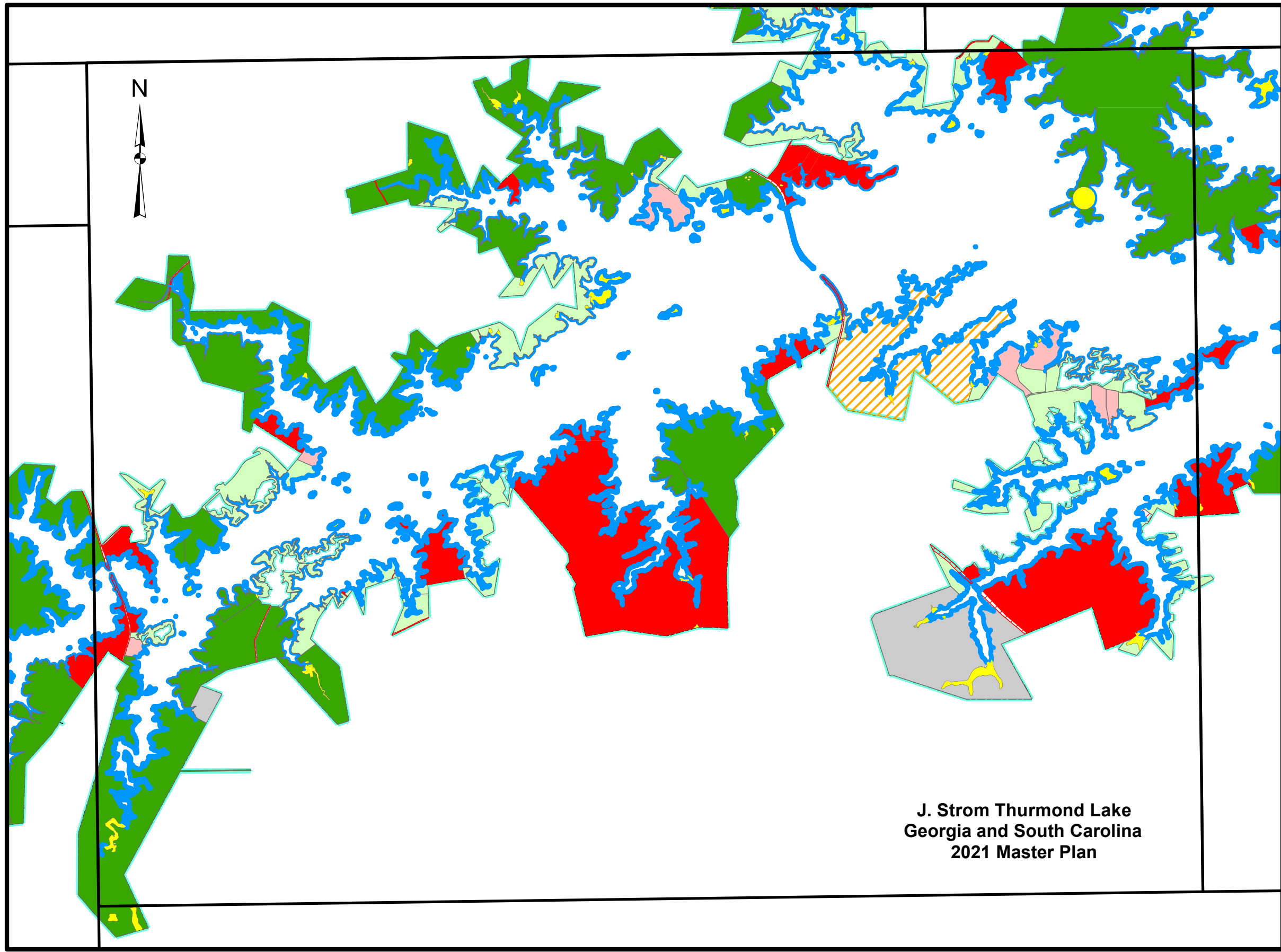
- Environmentally Sensitive Areas
- High Density Recreation
- Lake
- Low Density Recreation
- Mitigation
- Project Operations
- Recreation - Quasi_Private
- River
- Special Use
- Wildlife Mgt
- Property Line
- Zoning Index



JST Land Classification Maps- Plate 2 of 8



US Army Corps of Engineers®
Savannah District



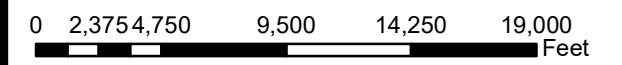
Location Map

Legend

Land Classification

- Environmentally Sensitive Areas
- High Density Recreation
- Lake
- Low Density Recreation
- Mitigation
- Project Operations
- Recreation - Quasi_Private
- River
- Special Use
- Wildlife Mgt
- Property Line
- Zoning Index

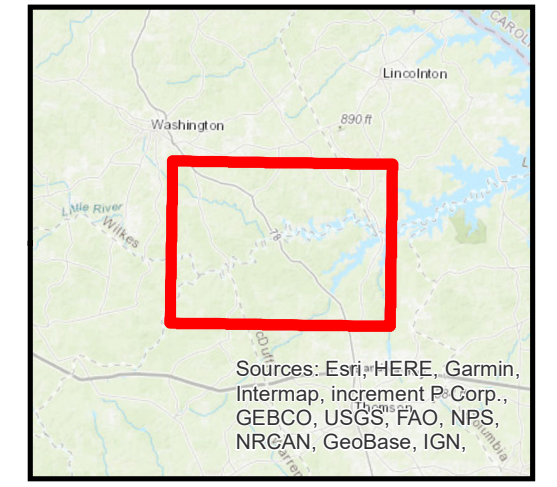
**J. Strom Thurmond Lake
Georgia and South Carolina
2021 Master Plan**



JST Land Classification Maps- Plate 3 of 8



**US Army Corps
of Engineers®**
Savannah District

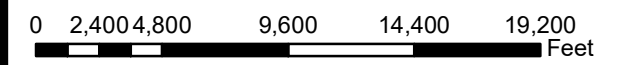
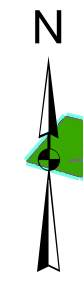


Location Map

Legend

- Land Classification**
- Environmentally Sensitive Areas
 - High Density Recreation
 - Lake
 - Low Density Recreation
 - Mitigation
 - Project Operations
 - Recreation - Quasi_Private
 - River
 - Special Use
 - Wildlife Mgt
 - Property Line
 - Zoning Index

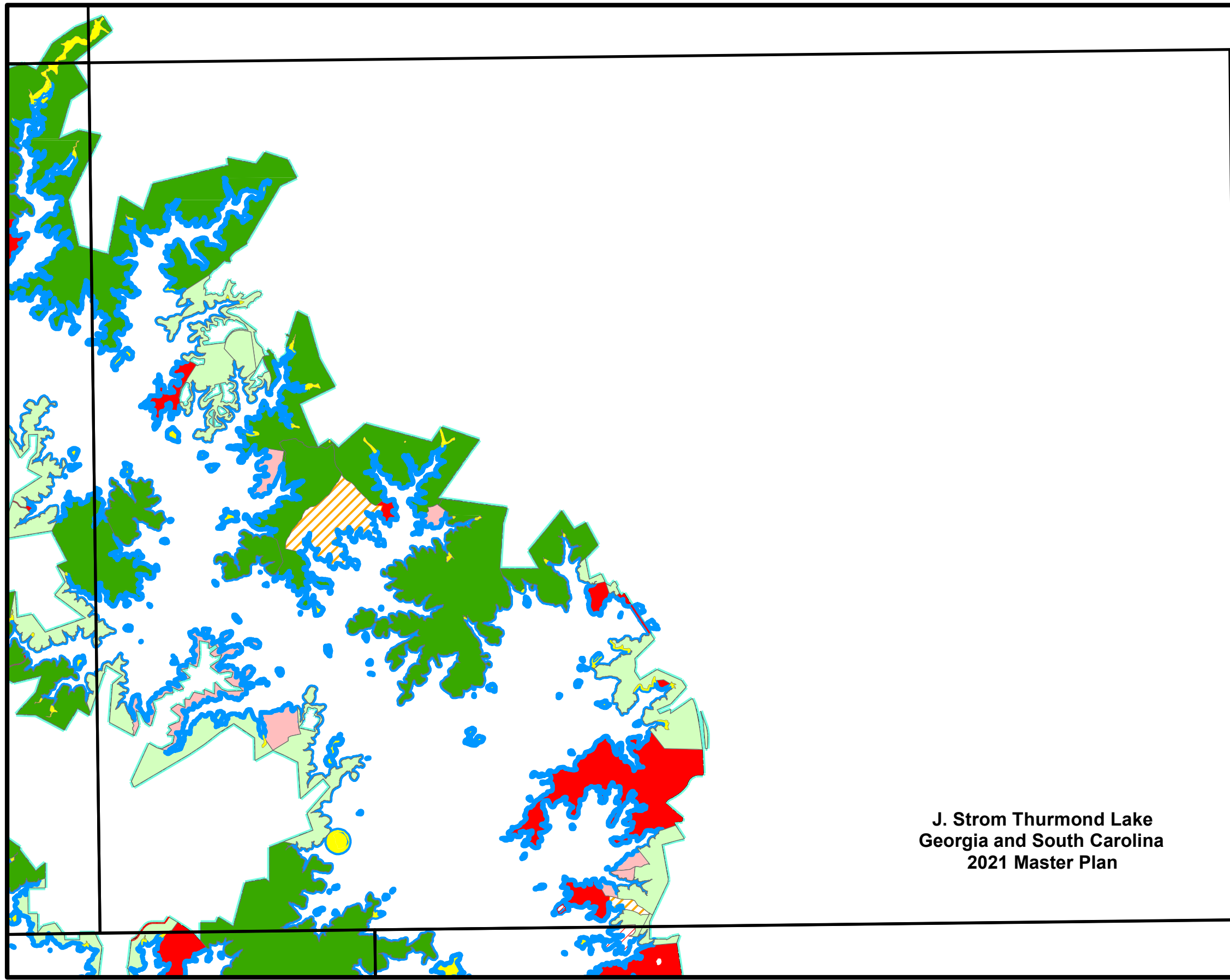
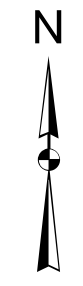
**J. Strom Thurmond Lake
Georgia and South Carolina
2021 Master Plan**



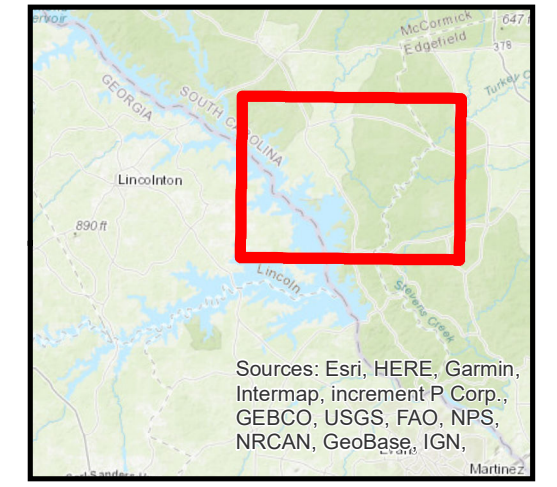
JST Land Classification Maps- Plate 4 of 8



**US Army Corps
of Engineers®**
Savannah District



**J. Strom Thurmond Lake
Georgia and South Carolina
2021 Master Plan**



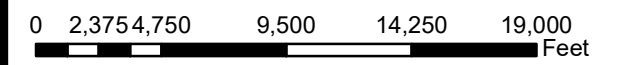
Location Map

Sources: Esri, HERE, Garmin, Intermap, increment P Corp., GEBCO, USGS, FAO, NPS, NRCAN, GeoBase, IGN,...

Legend

Land Classification

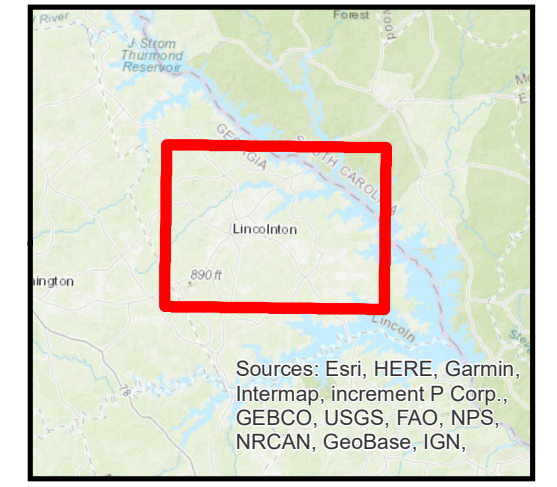
- Environmentally Sensitive Areas
- High Density Recreation
- Lake
- Low Density Recreation
- Mitigation
- Project Operations
- Recreation - Quasi_Private
- River
- Special Use
- Wildlife Mgt
- Property Line
- Zoning Index



JST Land Classification Maps- Plate 5 of 8



**US Army Corps
of Engineers®**
Savannah District

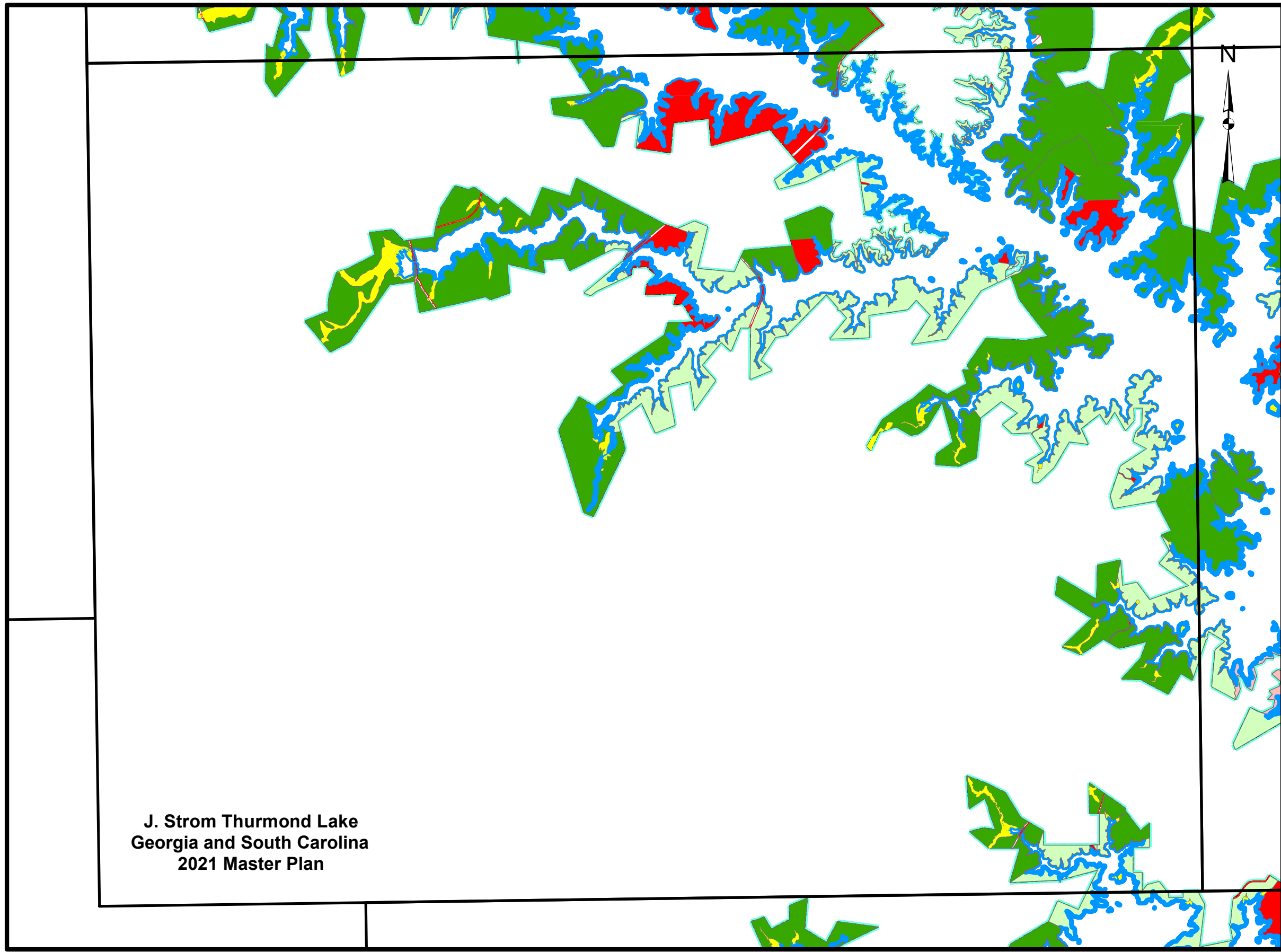
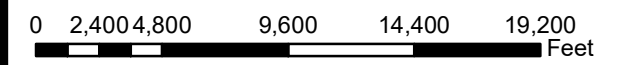


Location Map

Legend

- Land Classification**
- Environmentally Sensitive Areas
 - High Density Recreation
 - Lake
 - Low Density Recreation
 - Mitigation
 - Project Operations
 - Recreation - Quasi_Private
 - River
 - Special Use
 - Wildlife Mgt
 - Property Line
 - Zoning Index

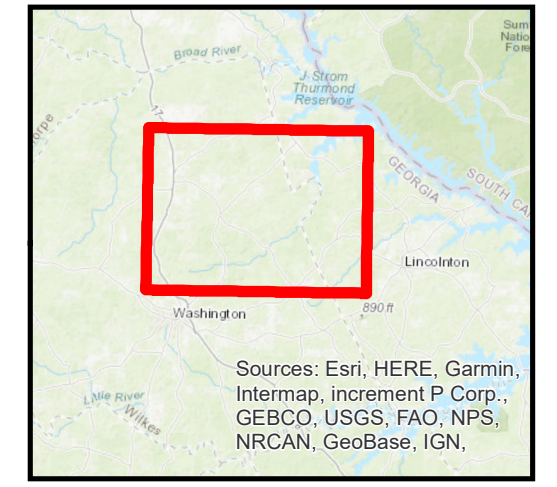
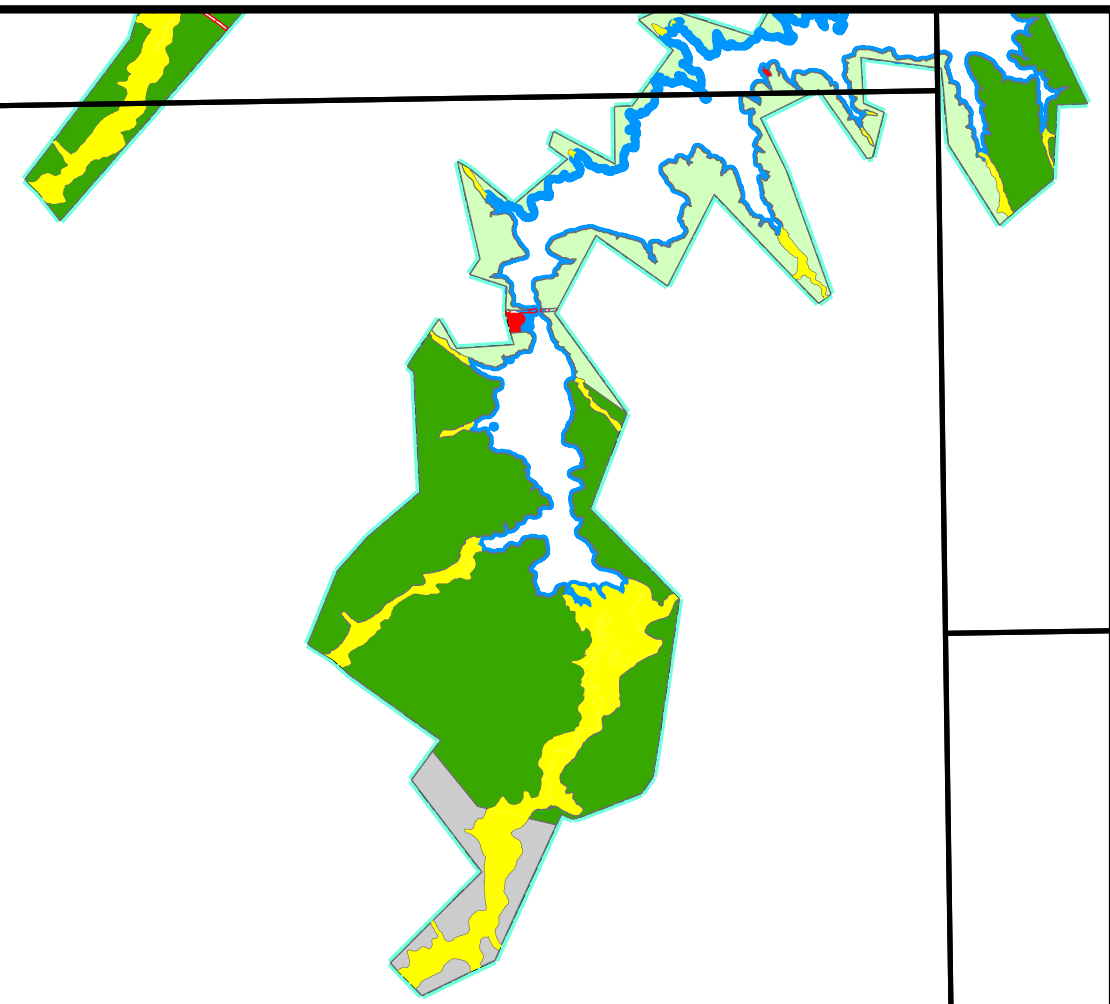
**J. Strom Thurmond Lake
Georgia and South Carolina
2021 Master Plan**



JST Land Classification Maps- Plate 6 of 8



**US Army Corps
of Engineers®**
Savannah District

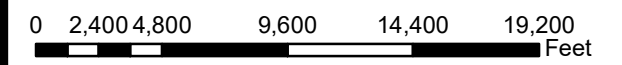


Location Map

Legend

- Land Classification**
- Environmentally Sensitive Areas
 - High Density Recreation
 - Lake
 - Low Density Recreation
 - Mitigation
 - Project Operations
 - Recreation - Quasi_Private
 - River
 - Special Use
 - Wildlife Mgt
 - Property Line
 - Zoning Index

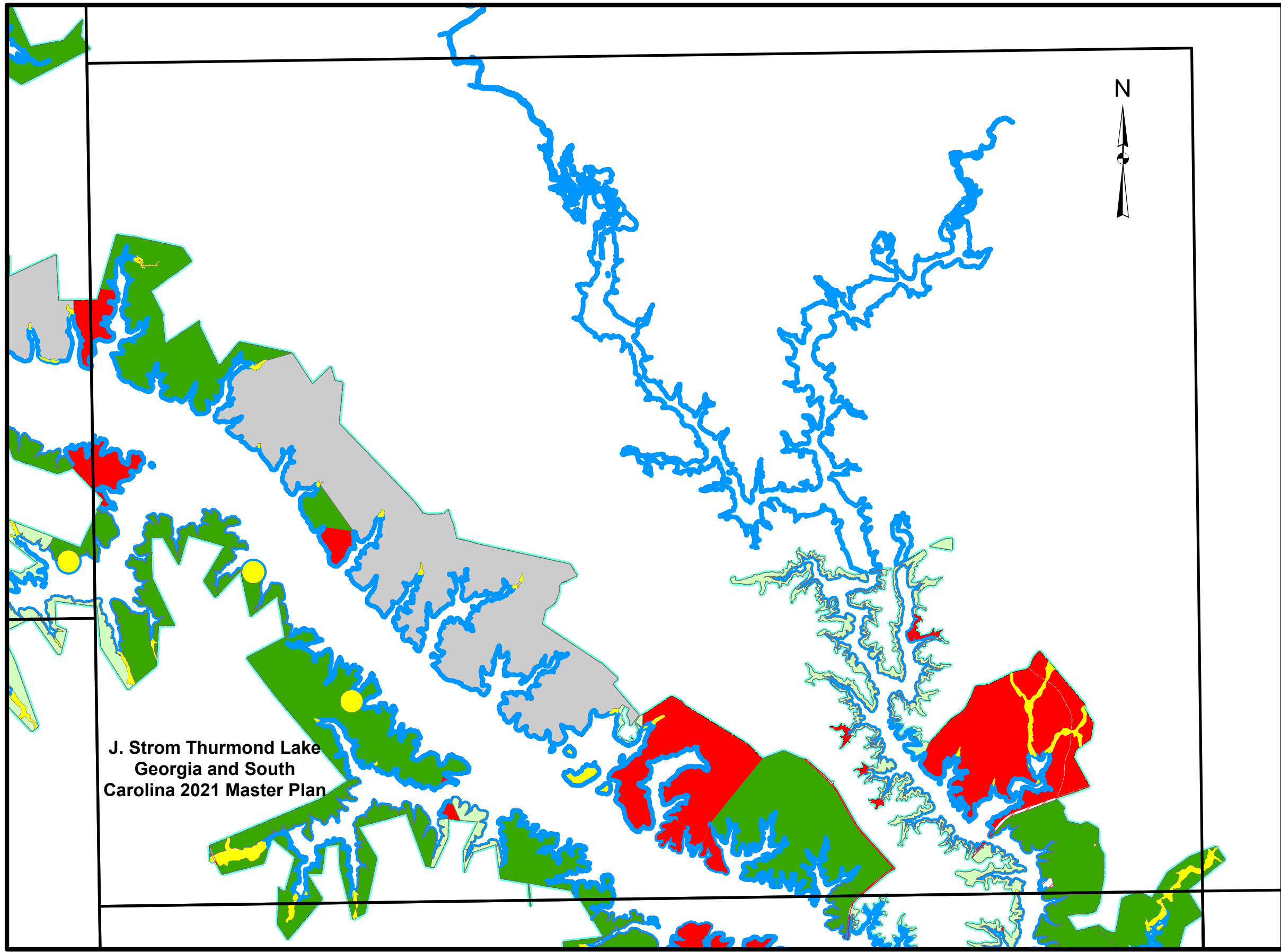
**J. Strom Thurmond Lake
Georgia and South Carolina
2021 Master Plan**



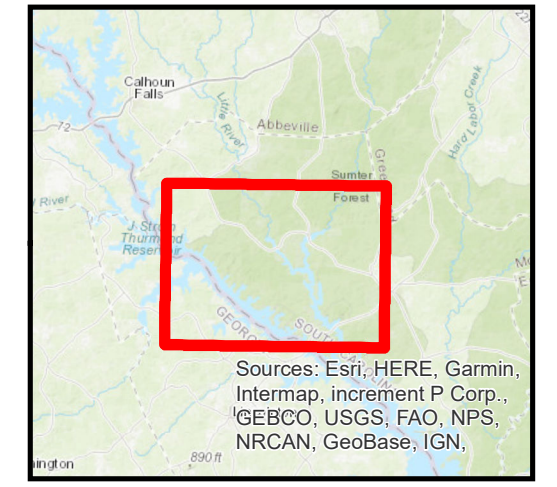
JST Land Classification Maps- Plate 7 of 8



US Army Corps of Engineers®
Savannah District



J. Strom Thurmond Lake
Georgia and South
Carolina 2021 Master Plan



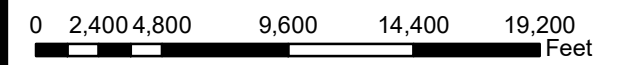
Location Map

Sources: Esri, HERE, Garmin, Intermap, increment P Corp., GEBCO, USGS, FAO, NPS, NRCAN, GeoBase, IGN,

Legend

Land Classification

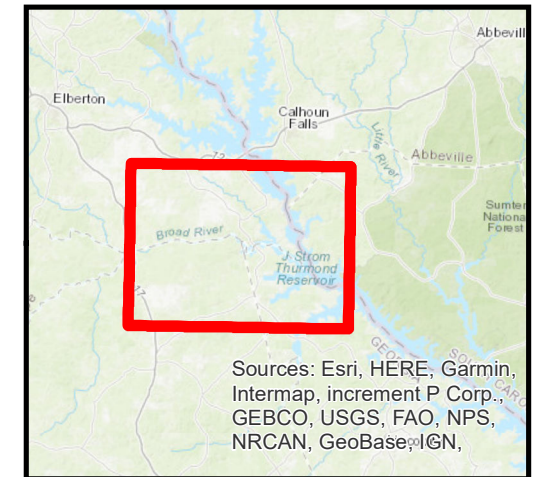
- Environmentally Sensitive Areas
- High Density Recreation
- Lake
- Low Density Recreation
- Mitigation
- Project Operations
- Recreation - Quasi_Private
- River
- Special Use
- Wildlife Mgt
- Property Line
- Zoning Index



JST Land Classification Maps- Plate 8 of 8



**US Army Corps
of Engineers®**
Savannah District



Location Map

Sources: Esri, HERE, Garmin, Intermap, increment P Corp., GEBCO, USGS, FAO, NPS, NRCAN, GeoBase, IGN,

**J. Strom Thurmond Lake
Georgia and South Carolina
2021 Master Plan**

Legend

Land Classification

- Environmentally Sensitive Areas
- High Density Recreation
- Lake
- Low Density Recreation
- Mitigation
- Project Operations
- Recreation - Quasi_Private
- River
- Special Use
- Wildlife Mgt
- Property Line
- Zoning Index

